

CRI-FHU NEWSLETTER

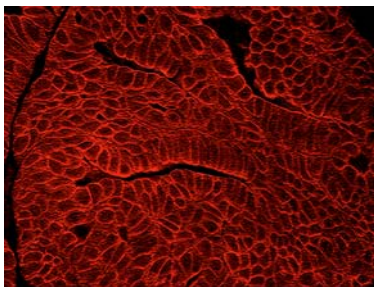
Volume 3, Issue 2
May, 2002

NEW ANTIBODY LIGHTS UP OVARIAN CANCER

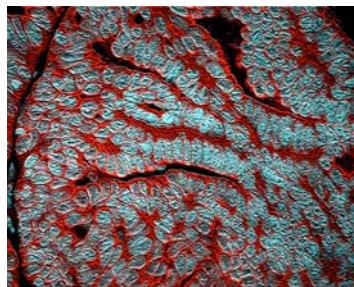
Emily McDuffee conducted part of her Ph.D. research during spring break in the Department of Pathology at the University of Alabama in Birmingham. She is determining the binding site for the CARE antibody against the cancer antigen. During carcinogenesis, a unique class of antibodies are developed, termed IgM, that never sero-connect to IgG. These IgM antibodies bind

to a unique protein only expressed during carcinogenesis.

Antigen staining in ovarian cancer



Antigen staining (red) with nuclear (blue) fluorescent dye in ovarian cancer



Inside this issue:

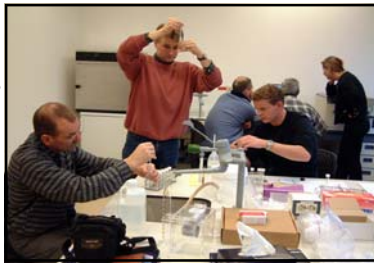
Trip to Brazil	2
Visit from Brazil	3
Rita's how old now???	2
First Place to Students	2
Student Plans for future	3
AACR Meeting	3
Thank you, donors	4

HOLLAND WORKSHOP

During the December Christmas break, Dr. Jerry Thornthwaite, and his wife, Bonita, were invited to conduct a workshop in Eindhoven, Holland. There were over 18 participants throughout Holland who learned the latest technologies in sample preparation and analysis by high-resolution DNA and nuclear electronic cell volume. They did take some time to visit Amsterdam and

the windmills of the countryside.

For another picture of the Thornthwaite's trip to Holland see page 4.



(Above) Holland scientists learning automated DNA/nuclear sizing techniques
(Above left) Holland scientists working with PARA reagent
(Left) Windmills in Holland

Special points of interest:

- The OLD and the NEW
- Dr. T travels to help Albert Einstein
- Trips to Holland, Brazil, and Miami, FL
- First place in regional science competition
- Who's getting married?
- Iguassu falls